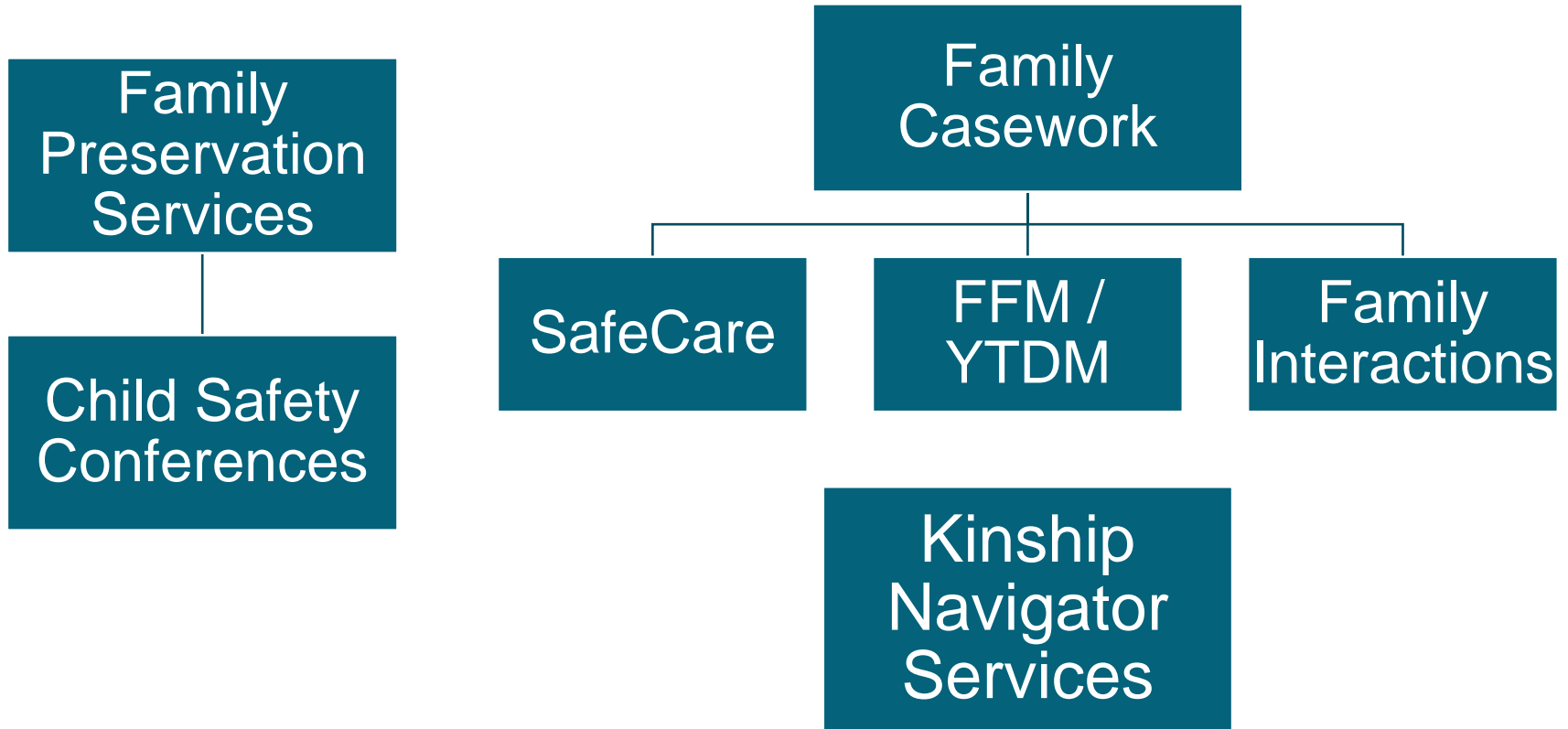




SafeCare

February 20, 2025

Service Array



SafeCare Overview

Short term, evidence-based, behavioral, in-home parent training program targeting risk factors for abuse and neglect

Delivered in modules of six sessions each, delivered weekly

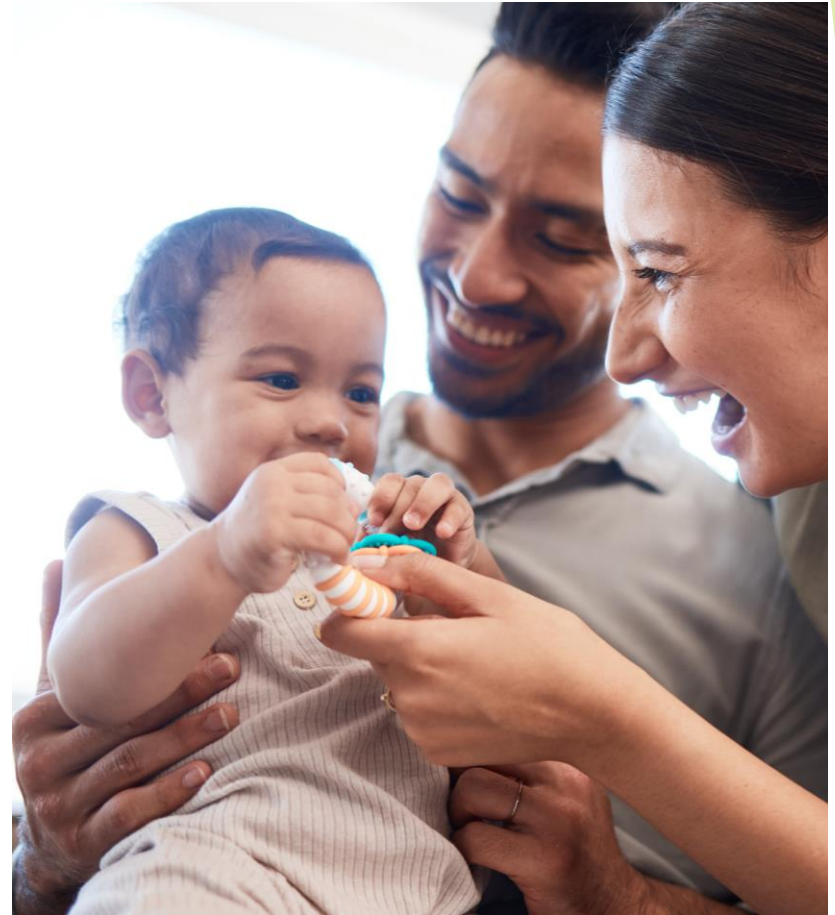
Curriculum uses role modeling, positive coaching

Three Modules

- Health
- Home Safety
- Parent-Child/Parent-Infant Interactions

Eligibility

- ▶ Open HHS services or accepted referral for non-agency services
 - Child ages 0-5 in the home
- ▶ Teen parents



Referrals

- ▶ Can be made at any point in the life of the case
- ▶ Family must have a base level of stability
- ▶ Submit for referral
 - 3055
 - Referral Face Sheet
 - Is this a single or multiple households
 - Non-agency SafeCare referral process is the same as non-agency service referral

SafeCare Delivery

60-90 minutes per session, during family routines targeted by the curriculum (bath time, meals, play time, etc.)

Primarily in the family's home

Pre-test at the start of each module and post-test at the end demonstrate caregiver skill growth

Modules can be delivered in any order, determined based on family's needs

Basic Structure of Sessions

Session 1: Assessment
(Pre-test)

Sessions 2-6: Explain,
model, practice, and provide
feedback associated with
the objective

Session 6: Assessment
(Post-test)



Health Module Goals

01

Keep children as healthy as possible

02

Prepare for when a child becomes sick or injured

03

Recognize when symptoms need emergency care, a doctor's appointment, or can be cared for at home

04

Keep good health records

Home Safety Module Goals



Understand the importance of a safe home



Know types of hazards within the household



Know ways to remove those hazards



Understand the importance of supervision

Parent-Child/Parent-Infant Interactions Module Goals

Enhance	Enhance parent-child/parent-infant relationships
Plan	Plan and organize daily activities as well as play activities
Interact	Interact positively with their children
Prevent	Prevent challenging child behavior

How can you help?

Advocate for
SafeCare
referrals
based on
family's
readiness

Ask parents
about
SafeCare
progress

Follow up
with
SafeCare
provider and
FSS